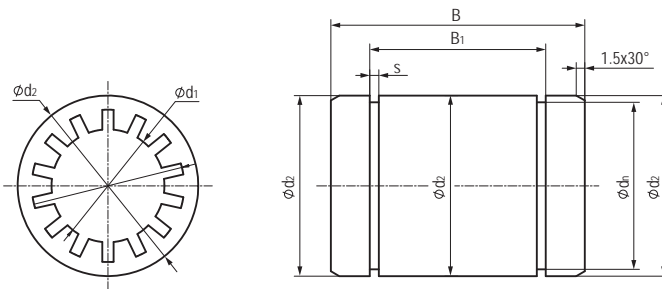


LIN-01 全塑料直线轴承 Plastic linear bearings



- 高性能EPB13材料制成
- 易用手直接装配
- 卡簧轴向固定
- 较小的配合间隙
- 适用于污垢或灰尘环境
- 使用温度-20℃/+60℃
- Made from EPB13 high-performance polymers
- Easy assembly by hand
- Axial secured by circlips
- Reduced bearing clearance
- Unaffected by dirt and dust
- Operation temperature -20℃/+60℃

标准规格 Standard specifications



产品编码 Part No.:

LIN-01-06

轴承内径 Inner diameter

LIN-01 系列直线轴承
LIN-01 standard bearings

座孔 Housing: H7 轴 Shaft: h6-h9

| 产品编码 Part No. | d_1 [mm] | 公差 Tolerance [mm] | d_2 [mm] | B [mm] | B_1 [mm] | s [mm] | d_1 [mm] |
|------------------|---------------|----------------------|---------------|-----------|---------------|-----------|---------------|
| LIN-01-06 | 6 | 0/+0.03 | 12 | 19 | 13.5 | 1.1 | 11.5 |
| LIN-01-08 | 8 | 0/+0.04 | 16 | 25 | 16.2 | 1.1 | 15.2 |
| LIN-01-10 | 10 | 0/+0.04 | 19 | 29 | 21.6 | 1.3 | 17.5 |
| LIN-01-12 | 12 | 0/+0.04 | 22 | 32 | 22.6 | 1.3 | 20.5 |
| LIN-01-16 | 16 | 0/+0.04 | 26 | 36 | 24.6 | 1.3 | 24.2 |
| LIN-01-20 | 20 | 0/+0.04 | 32 | 45 | 31.2 | 1.6 | 29.6 |
| LIN-01-25 | 25 | 0/+0.05 | 40 | 58 | 43.7 | 1.85 | 36.5 |
| LIN-01-30 | 30 | 0/+0.05 | 47 | 68 | 51.7 | 1.85 | 43.5 |

| 产品编码 Part No. | 轴径 Shaft [mm] | 座孔 Housing [mm] | 公差 Tolerance [mm] | F max. [N] 最大动载荷 Dynamic Load P=2.5MPa | F max. [N] 最大静载荷 Static Load P=17.5MPa | 重量 Weight [g] |
|------------------|------------------|--------------------|----------------------|--|--|------------------|
| LIN-01-06 | 6 | 12 | 0/+0.018 | 200 | 1400 | 2 |
| LIN-01-08 | 8 | 16 | 0/+0.018 | 250 | 1750 | 4 |
| LIN-01-10 | 10 | 19 | 0/+0.021 | 363 | 2538 | 7 |
| LIN-01-12 | 12 | 22 | 0/+0.021 | 480 | 3360 | 9 |
| LIN-01-16 | 16 | 26 | 0/+0.021 | 720 | 5040 | 13 |
| LIN-01-20 | 20 | 32 | 0/+0.025 | 1125 | 7875 | 24 |
| LIN-01-25 | 25 | 40 | 0/+0.025 | 1813 | 12688 | 47 |
| LIN-01-30 | 30 | 47 | 0/+0.025 | 2550 | 17850 | 72 |